

Introduction .....	- 3 -
Main Menus .....	- 3 -
Start Here .....	- 3 -
General Information .....	- 4 -
Create an Account .....	- 4 -
Terms and Conditions .....	- 5 -
Disclaimers.....	- 5 -
Available Areas .....	- 5 -
Map Operation .....	- 6 -
Help .....	- 8 -
Frequently Asked Questions.....	- 8 -
User Guide .....	- 8 -
Links .....	- 8 -
Contact Us.....	- 8 -
User's Account .....	- 9 -
View/Edit My Account.....	- 9 -
View My Bids .....	- 9 -
Place New Bid .....	- 9 -
Member Management .....	- 9 -
Club Management .....	- 10 -
View Messages .....	- 10 -
The Bidding Process .....	- 10 -
Start Bidding .....	- 10 -
Renewal Process.....	- 10 -
My Bid History .....	- 10 -
What Happens Now? .....	- 11 -

Executing a Lease.....- 11 -

Failure to Mail Signed Lease with Full Payment.....- 12 -

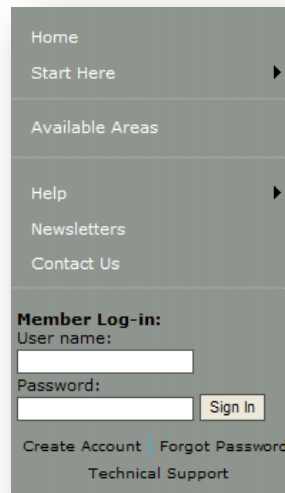
## Introduction

The WeyerhaeuserHuntingLands.com website manages the bids for Recreation License Units (RLUs) used for hunting as well as other recreational uses across the United States. Upon accessing the website, any user will see the following:



## Main Menu

The Home Page has six main menus and a convenient log-in feature. The user should see listed: Home, Start Here, Available Areas, Help, Newsletters, Contact Us, and the quick log-in feature upon loading the webpage.



## Start Here

The Start Here menu provides the user a series of informational screens as well as a way to create an individual account which is required to place bids on RLUs.

General Information  
Create Account  
Terms and Conditions  
DisClaimers

## General Information

The General Information page provides detailed information about the WeyerhaeuserHuntingLands.com website.

### General Information

Weyerhaeuser Timberlands provides recreation opportunities as a public service to the communities surrounding our properties. We offer licenses for exclusive recreation rights on these properties. It is expected that the exclusive license fosters a mutually beneficial relationship where-in license holders may control access and improve wildlife habitat while we benefit from the custodial interests of the license holders. As these licenses become available on parcels of our land we ask prospective licensees to submit the price they are willing to pay for the exclusive recreation rights. This approach is meant to fairly accommodate past license holders, new license holders, interested parties, and neighboring landowners. In many cases licenses are reserved for adjacent landowners or for renewal to previous licensees.

## Create an Account

An account must be created in order to place bids and license land from Weyerhaeuser Hunting Lands. The user must type in their user name and password. The user must also select three security questions from the drop down lists in case the password is misplaced, and must type in the corresponding answers in the boxes provided. These questions will be used at a later date in the event that the user's password is forgotten. The user must then add in contact information into the required fields at the bottom of the screen, and then click "Create Account" to launch the account, or "Cancel" to cancel the request to create an account.

**Account Information**

Creating an account allows you to renew an existing license or bid on exclusive hunting rights to any available tracts of land owned by Weyerhaeuser Hunting.

**Account Information:**

\*User Name  [ - ]  
\*Password   
\*Retype Password

**Security Questions:**

What was your childhood nickname?  [ v ]  
What school did you attend for sixth grade?  [ v ]  
What is the street number of the house you grew up in?  [ v ]

**Contact Information:**

\*First Name  [ - ]  
\*Last Name   
\*Street Address 1   
Street Address 2   
\*City   
\*State  [ v ]  
\*Zip code   
\*Primary Phone  -  -   
\*E-mail Address   
Secondary Phone  -  -

\* Required fields

It is not necessary for users to create multiple accounts. If a user is affiliated with different hunting clubs, several clubs can be managed from one account. For more information about creating clubs, see **Club Management** below (Page 9).

## Terms and Conditions

The Terms and Conditions page provides detailed information on the Terms and Conditions of use for licensing land from WeyerhaeuserHuntingLands.com. All users should review the Terms and Conditions prior to creating an account.

### Terms and Conditions

The terms and conditions below are general in nature and may vary slightly for state to state. These are meant to be general rules of thumb, but lease specific restrictions will be included in your actual license agreement. They may vary, be more restrictive, and include restrictions not covered below. Refer to your individual license agreement or contact the local hunting representative for restrictions specific to your lease.

- 1. HUNTING:** Permittees, club members, and guests agree to abide by all applicable state and federal wildlife laws and seasons now or hereafter in force in exercising the rights granted herein. In addition, use of the land falls under the following exclusions:
- 2. LAND USE:** Permittees agree that due care will be exercised to prevent forest fires on the Land and that no timber will be severed, used, or destroyed on the Land. Permittees agree further not to engage in any activities, which tend to degrade the forest or water environment and agree to confine all vehicles (including automobiles, trucks, off-roads

## Disclaimers

The Disclaimers link within the Start Here Menu provides the user with legal disclosures. The Disclaimers should be reviewed prior to creating an account and placing any bids.

### Disclaimers

Your use of this web site is subject to the conditions and qualifications described below. By using this web site, you agree to accept such conditions and qualifications.

**No Warranties: Limitation of Liability.** This web site includes information, documents, and materials (collectively, the "Contents") that are subject to change without notice. Weyerhaeuser Hunting Lands expressly disclaim any obligation to keep Contents up to date or free of errors or viruses, or to maintain uninterrupted access to this web site. This web site (including all Contents) is provided "AS IS."

Weyerhaeuser Hunting Lands assumes no responsibility for errors or omissions in any Contents, including Contents that are referenced by or linked (by hypertext links) to third party web sites. Weyerhaeuser Hunting Lands make no representations or warranties of any kind whatsoever for the Contents or third party web sites or for any products or services mentioned or offered in the Contents or in third party web sites.

#### Legal Notices:

The maps and all other information on this site (collectively referred to as Site Information) are believed to be accurate when posted. However, Licensor is not responsible for any errors, discrepancies or omissions in Site Information. Also, Site Information is subject to change at any time without notice. By using this web site, you agree that your use of the

## Available Areas

The Available Areas menu consists of three drop down menus, State, County, and RLU number. After selecting the desired state from the first drop down list, the user can then select available counties from that state, and available RLU numbers from that county and by clicking "Go", the map will then zoom to the desired area.

## Available Areas

Land available for licensing is listed geographically by state and county. If your preferred county is not listed, then property for hunting is not currently available in that county.

Each tract is shown on a map and is identified by a Recreational License Unit (RLU) number and a colored polygon:



Green - Available for renewal (now) or bid (after June 1, 2009)



Red - Already Licensed



Yellow - Pending; please check back for changes

To view detail information, simply click on the polygon.

A selected RLU polygon will be highlighted transparent yellow with a blue dashed boundary, as seen below.



Depending on the available information for each parcel, you can see the total number of acres, adjacent properties, and topographical maps that include water and road features.

Hunt clubs are allowed to bid on as many tracts of land as they like.

Bidding for available RLUs in the 2009-2010 season starts on **June 1, 2009**. You must [create an account](#) before you can participate in the bidding process.

Potential license holders should review the [Terms and Conditions](#) associated with licensing land from Weyerhaeuser.

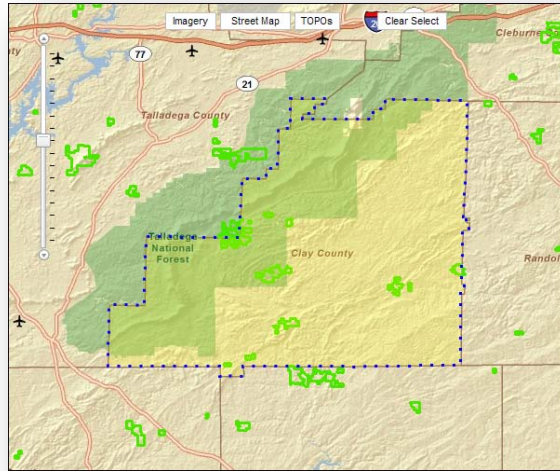
See the [User Guide](#) for more information.

Web site design by Orbis Inc. ©2009 Orbis Inc. All rights reserved.

## Map Operation

Zooming in can be done by double clicking with the left mouse button on the desired area, and also by using the zoom scroll tool (up=zoom in; down=zoom out) on the left pane of the map window. Panning can be accomplished by clicking within the map with the left mouse button and holding the button in while dragging the mouse to pull the map in any desired direction.

On the top right of the map there are three setting choices and a Clear Select option. The Imagery option will change the background to a satellite image of that region, while removing all map features (including roads) except location polygons. The Street Map option is the standard map displaying roads and other features typically encountered on a map. The TOPOs option will display a topographic map of the area as well as the roads and other map features.



When the user zooms in far enough, the Recreational Licensing Unit (RLU) for every tract of land will appear on the map. The user can click inside of a tract of land and a message box will open. This will provide an information window with general information on the selected RLU, comments on the tract, and links to PDF maps showing either the aerial imagery, topographic map, or a map showing access points for the selected RLU. At this point the user can select the **Bid on this RLU** link to begin the bidding process.

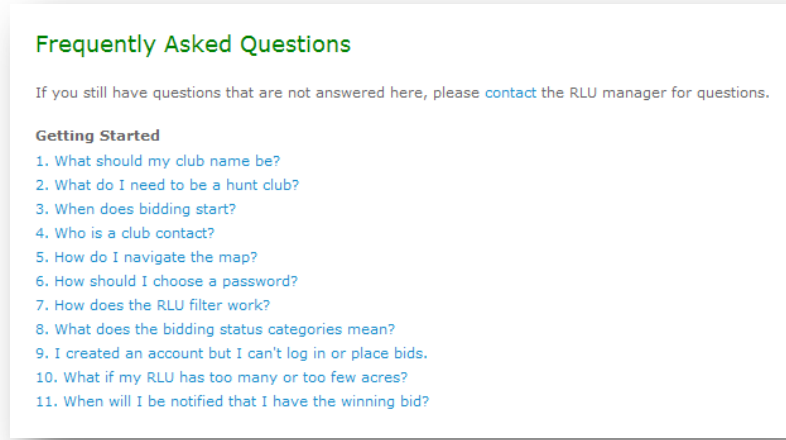


Everything up until this point can be accomplished without logging into the application. If the user attempts to access a RLU on the application they will be directed to the Log In screen where they will enter their user name and password to access a pre-existing account. In the event that the user has not yet set up an account, they will click on the **Create Account** link.

## Help

### Frequently Asked Questions

The FAQ is a page where the user can view common questions and answers. If the user has any new questions they can be emailed to the Weyerhaeuser Hunting Lands RLU Manager by following the **Contact Us** link.



**Frequently Asked Questions**

If you still have questions that are not answered here, please [contact](#) the RLU manager for questions.

**Getting Started**

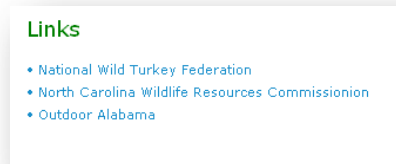
1. What should my club name be?
2. What do I need to be a hunt club?
3. When does bidding start?
4. Who is a club contact?
5. How do I navigate the map?
6. How should I choose a password?
7. How does the RLU filter work?
8. What does the bidding status categories mean?
9. I created an account but I can't log in or place bids.
10. What if my RLU has too many or too few acres?
11. When will I be notified that I have the winning bid?

### User Guide

The User Guide is a link to this document, which will open up in a new window.

### Links

This page contains a number of links useful to anyone who has, or is considering, licensing any of the properties listed on WeyerhaeuserHuntingLands.com.



**Links**

- [National Wild Turkey Federation](#)
- [North Carolina Wildlife Resources Commission](#)
- [Outdoor Alabama](#)

### Contact Us

This section contains the contact information for each state.

## Contact Information

Location	Contact Address	Contact Phone	E-mail Address
Arkansas	1507 Hwy 70/71 East, DeQueen, AR - 71832	870-286-4363	<a href="mailto:CossatotHuntingClub@Weyerhaeuser.com">CossatotHuntingClub@Weyerhaeuser.com</a>
Oklahoma	1507 Hwy 70/71 East, DeQueen, AR - 71832	580-494-6761 x230	<a href="mailto:KiamichiHuntingClub@Weyerhaeuser.com">KiamichiHuntingClub@Weyerhaeuser.com</a>
Texas - AO	1507 Hwy 70/71 East, DeQueen, AR - 71832	580-494-6761 x230	<a href="mailto:KiamichiHuntingClub@Weyerhaeuser.com">KiamichiHuntingClub@Weyerhaeuser.com</a>
Texas - North Lou	5810 Hwy 1 Bypass, Natchitoches, LA - 71457	Peyton weeks 318-238-7228	<a href="mailto:xmacctNLAhuntingclubs@Weyerhaeuser.com">xmacctNLAhuntingclubs@Weyerhaeuser.com</a>
North Louisiana	5810 Hwy 1 Bypass, Natchitoches, LA - 71457	Peyton weeks 318-238-7228	<a href="mailto:xmacctNLAhuntingclubs@Weyerhaeuser.com">xmacctNLAhuntingclubs@Weyerhaeuser.com</a>
Mississippi/Louisiana	211 Armstrong Road Columbia, MS - 39429	Melissa Regan 601-731-7915	<a href="mailto:xmacctmslouthunting@Weyerhaeuser.com">xmacctmslouthunting@Weyerhaeuser.com</a>
Mississippi/Alabama	29 Tom Rose Rd, Columbus, MS - 39701	662-245-5217	<a href="mailto:xmacctmsal hunting@Weyerhaeuser.com">xmacctmsal hunting@Weyerhaeuser.com</a>
North Carolina	1785 Weyerhaeuser Rd, Vanceboro, NC - 28586	252-633-7377	<a href="mailto:info@enchuntinglands.com">info@enchuntinglands.com</a>

Web site design by Orbis Inc. ©2009 Orbis Inc. All rights reserved.

## User's Account

Once an Account has been created and the user has logged into WeyerhaeuserHuntingLands.com, the user is now able to utilize all that the site has to offer. From the user's account page, one is able to perform a number of tasks pertaining to the licensing process. Aside from now being able to bid on properties, a user has access to all the tools needed to track their bidding history, organize club memberships, and download important documents.

## View/Edit My Account

The View/Edit Account link takes the user to the form needed to update their account information. Information such as e-mail or address changes.

## View My Bids

By clicking the View my bids link, the user can see their bid history of all previous bids, including the status, RLU, club name, date, comments on the tract, and bid amount.

## Place New Bid

The place new bid link will take the user to a screen with a RLU drop down list, and the user can choose an RLU from the list to place a new bid on.

## Member Management

This link allows the user to edit, add, and delete members within clubs.

## Club Management

This link allows the user to add and delete clubs, and assign members to a club. Users are able to manage multiple clubs from the same account if desired. This functionality will be useful for account holders who are involved in the management of multiple hunting clubs with different License Agreements. Users may add or delete multiple clubs by using the “Click [here](#)” link located on the Club Management page. Users will need to assign club members to each club by using the dropdown menu in the center of the screen to navigate between each club.

## View Messages

The View messages link allows the user to view messages sent to them and sent by them from other users in the application.

## The Bidding Process

### Start Bidding

To begin bidding, the user must first navigate to the RLU maps discussed earlier in this document, and select an available RLU to bid on. By hovering the mouse cursor over a RLU marker the RLU number and acres will be displayed. By clicking on the RLU, more detailed information will appear and the Bidder can choose to Bid on this RLU.

Once selecting a specific RLU for Bidding the Bidder will be directed to a Bidding screen. This screen will give you details on the selected RLU as well as showing both the Required Bid as well as the Minimum Bid required for the Bidder to place a new Bid. The Bidder can also post any comments they wish to add to their Bid for the Weyerhaeuser Hunting Lands RLU Manager to review during the bid acceptance process.

### Renewal Process

When the Bidder is actually renewing a previously licensed RLU the following steps should be taken to complete this process:

- 1) Bidder will login to the website arriving at the **My Club** page.
- 2) Bidder will follow the link to the **Review your existing bids**
- 3) The Weyerhaeuser Hunting Lands RLU Manager will have reserved the renewal RLU showing a **Reserved** status designation. From here the Bidder is given the opportunity to **Accept** the reservation. Once accepted, the Bidder can immediately follow through with the license documentation process generating the official RLU document described the next section. Alternatively, if the Bidder does not want to renew, clicking on **Decline** for the reserved RLU effectively releases it out to open bid to all Bidders. Note: Within the map interface, any RLU pin colored GREEN is open to bidding. When the RLU pin is accepted it will turn RED indicating that this RLU is now unavailable. If the RLU is reserved for an existing bidder it will be colored YELLOW signifying that this RLU has been reserved for a previous license holder. If the previous license holder does not wish to renew their license, the RLU will become GREEN as it will once again be open to bidding.

### My Bid History

After placing the Bid, the Bidder is taken to the My Bid History page. Alternatively, this page may be reach via the **My Club** page followed by the link to **Review your existing bids**.

The My Bid History page provides the Bidder with information on all bids and renewals placed by the Bidder or Weyerhaeuser Hunting Lands RLU Manager. There are five different status types that could be seen:

- **Declined** – The Weyerhaeuser Hunting Lands RLU Manager has accepted another Bidders bid for the selected RLU.
- **Accepted** – The Weyerhaeuser Hunting Lands RLU Manager has accepted the Bidders last bid for the selected RLU.
- **Pending** – The Bidder currently holds the highest bid for the selected RLU.
- **Outbid** – The selected RLU is still accepting bids; however the Bidder does not currently hold the highest bid. They can now increase their bid if desired.
- **Reserved** – The Weyerhaeuser Hunting Lands RLU Manager has exclusively reserved the selected RLU for the Bidder as a renewal.

There are a number of different actions that can be taken depending on the status of the RLU.

- **Accept/Decline** – For Pending RLUs there will be option to click either the **Accept** link to renew their license, or to select the **Decline** link to release the license.
- **Create License** – For all Accepted bids there will be a link that says **Create License**. The Bidder must click this link in order to generate the official RLU document. Upon selecting the **Create License** link the first time, the Bidder will be required to populate information for each individual club member.
- **Add Members** – Club Members can be added, removed, or modified up until the final document is created. The official RLU document will contain information on how to submit the RLU fees to WeyerhaeuserHuntingLands.com. If a bidder has successfully bid on other RLUs and has generated the license documents for those RLUs, they will have the ability to select club members that have been entered on the previous RLUs without the need to re-enter all the information. This can be accomplished by clicking the Add Members from Other RLUs link at the top of the License Creation screen. If the link has been selected all club members entered for all RLUs under the active account will be seen as in the example below:
- **Download Documents** – Allows the user to download their license and other important documents, such as how to submit fees to WeyerhaeuserHuntingLands.com.
- **Requests** – Gives users the chance to make requests.

## What Happens Now?

### Executing a Lease

Congratulations! As a bidder, you have successfully placed a bid on an RLU, and that Bid has been accepted by Weyerhaeuser Hunting Lands!!! You then received an email telling you how to generate your license document, and you have completed the license creation, so what happens now?

The process from this point is pretty simple. After you have all your club members and generated your lease document you will follow the directions on the Lease Document cover letter. The appropriate people will need to sign the Lease

Document as explained in the Lease Document cover letter, and then the signed Lease Document must be mailed to the address listed with full payment. This must be completed within the timeframe described within the Lease Document. Weyerhaeuser Hunting Lands will then confirm whether the payment amount is correct, verify that all required signatures are included and they will then sign the Lease Document which will result in an “Executed Lease.”

### **Failure to Mail Signed Lease with Full Payment**

In the event that you have made it completely through the renewal and/or bidding process and your bid has been accepted; yet you do not: create the lease document, add all Club Members, sign the Lease Document, and mail in the payment in full, all within the timeframe described in the Lease Document, then your renewal and/or bid will be declined and the RLU will be re-opened for bidding to the general public. It is very important to follow the directions in the Lease Document in order to complete the Lease Execution process correctly.